

WH1000

Alluminium/steel alloy structure

Ratio 38:1

Reduction unit with worm wheel and irreversible worm-screw.

(Reverse motion is possible only when the operator pulls the operating lever. Therefore this reduction system requires no brakes.)

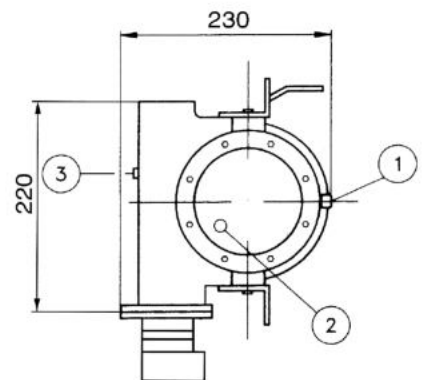
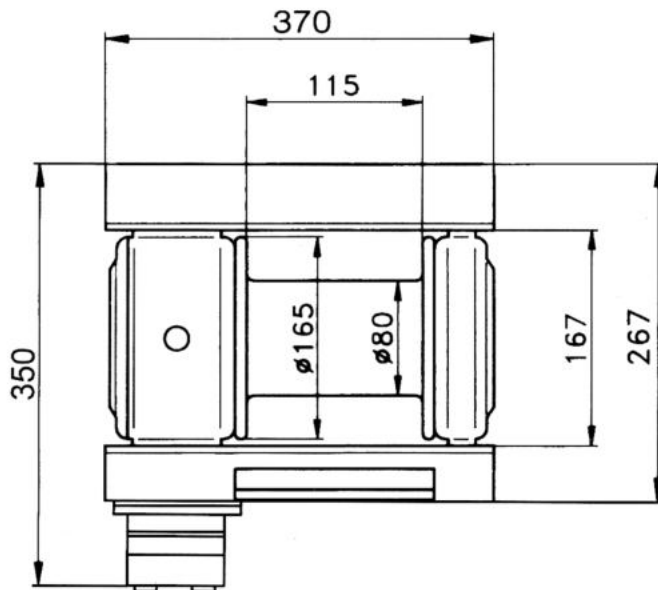
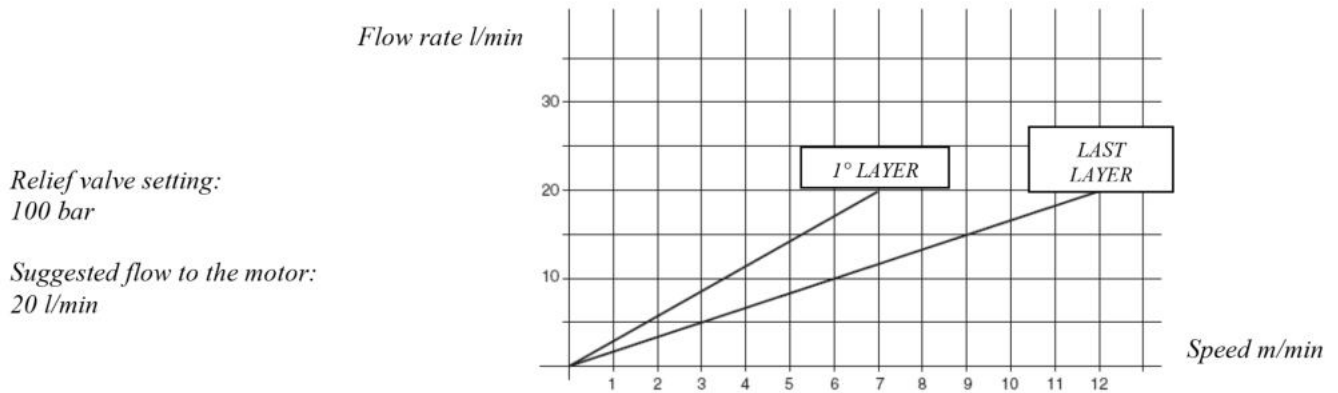
1st cable layer pulling capacity: 1000 kg (with empty drum)

Zinc-plated steel cable guide

Recommended cable: Ø 8 mm - max. cable capacity: 25 m (extra)

Total weight without cable: 22 kg

Cable winding speed diagram



CABLE LAYER	LINE PULL	CABLE LENGTH
1 st	997 kg	3,5 m
2 nd	829 kg	7,8 m
3 rd	710 kg	12,8 m
4 th	621 kg	18,5 m
5 th	552 kg	24,9 m
Max. cable capacity: 25 m Ø 8 mm		

- 1 - Oil filling plug
- 2 - Oil level plug
- 3 - Oil drain plug